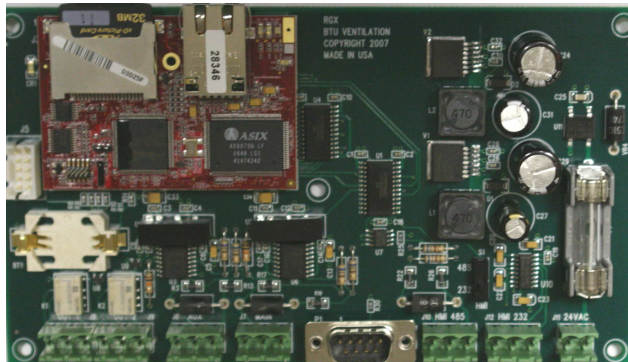


The RGX card was developed to act as a communications gateway, providing a web interface for most any type of controller. The RGX can poll up to 10 devices on two different isolated RS-485 ports. The communications protocol can be RTU Modbus or BCS with adjustable baud rates. The RGX uses a spread sheet to define each of the data points, records, alarms and format of the web interface. The RGX has an embedded web server that will display all data and allow changes on a web page with three levels of security. The embedded web server will also send text messages for alarms and updates. The network connection also allows a variety of remote software and data collection to poll the devices.

The RGX uses a 64MB picture card for nonvolatile memory and has the ability to store a large number of records for each of the devices.



RGX SPECIFICATIONS

- Power Supply - 24VAC or regulated 24VDC, 1 amp
- Two dry contact alarm relay outputs
- One RS-232 / RS-485 Modbus Slave port
- One RS-232 Modbus Slave port
- Two Opto isolated RS-485 Master ports
- One Ethernet RJ-45 port
- Real Time clock calendar
- 64MB picture card
- Web based communications interface
- Excel Records interface

RGX WEB INTERFACE

PRO R&D
7/9/2008 1:07:02 pm

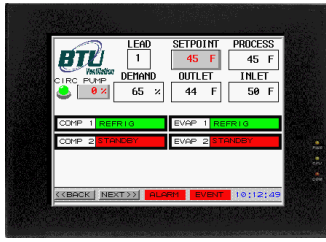
Name	Mode	SP	Inlet	Outlet	Dis P	Suc P	Suc SH	Out	Lead
Comp 1	REFRIG	30 F	45 F	38 F	205 psi	41 psi	19 F	100 %	1

Name	Mode	SH SP	SH A	Valve A
EEV 1	REFRIG	12.0 F	11.0 F	26.0 %

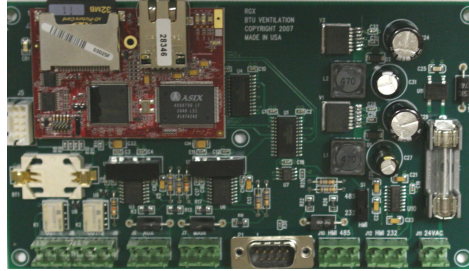
Name	AMBIENT	CONDENSER	REC OUT	LL TEMP	AMPS
MON	84 F	102 F	101 F	92 F	17 amp

Name	ENERGY	DEMAND	AVG P	A	B	C
POWER	64.2 kwh	17.8 kw	15.3 kw	25.1 amp	24.2 amp	25.2 amp

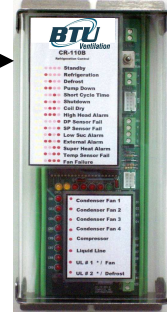
Color Touch Screen



RGX



Compressor 1
CR-110



Internet



47418 US Highway 10
Perham Mn, 56573
Phone: 218-346-3357
Toll Free: 888-884-8070

SALES AND DISTRIBUTION