

# CRX Bin Controller

www.btuvent.com



**BTU continues to lead the industry in becoming the first to design a true small bin controller. BTU has recognized the need for an economical small control panel to provide accurate temperature, humidity and CO2 control.**



*Complete control panel with fresh air door controller.*

## STANDARD FEATURES:

- Fresh air door control with 1/10 degree control
- 0-20ma Refrigeration control
- 0-20ma Fan VFD speed control
- On board real time clock calendar
- 8 solid state outputs
- 5 relay outputs
- Dual Plenum temperature sensors
- Dual opto isolated RS-485 communication ports
- Flexible heat mode and Setpoint ramping
- Back lighted 2x16 local display
- Joystick control
- Outside and Plenum Humidity sensors
- CO2 sensor
- Central distributed time, outside temp and humidity to multiple panels

## OPTIONAL FEATURES:

- Single color TPC touch screen interface for up to 10 CRX Bin Controllers.
- TPC touch screen gateway to internet for remote control and polling of data.
- Full internet web interface for 10 Bin Controllers using one RGX embedded web server.
- RGX provides detailed records for up to 10 CRX panels, using web interface. Direct download into Excel Spreadsheet.
- RGX provides e-mail and text messaging for up to 10 CRX panels.
- SDX multiple fresh air door controller
- VPN web site, look at any number of CRX Bin controllers on one page.
- VPN records without RGX web interface using TPC Touch screen.

## INPUTS & OUTPUTS:

### Analog Inputs (16)

- Plenum 1 temperature sensor
- Plenum 2 temperature sensor
- Outside Air temperature sensor
- Return Air temperature sensor
- Pile 1 temperature sensor
- Pile 2 temperature sensor
- Pile 3 temperature sensor
- Outside Air Humidity sensor
- Plenum Humidity sensor
- CO2 sensor
- Door Position input

### Analog Outputs (4)

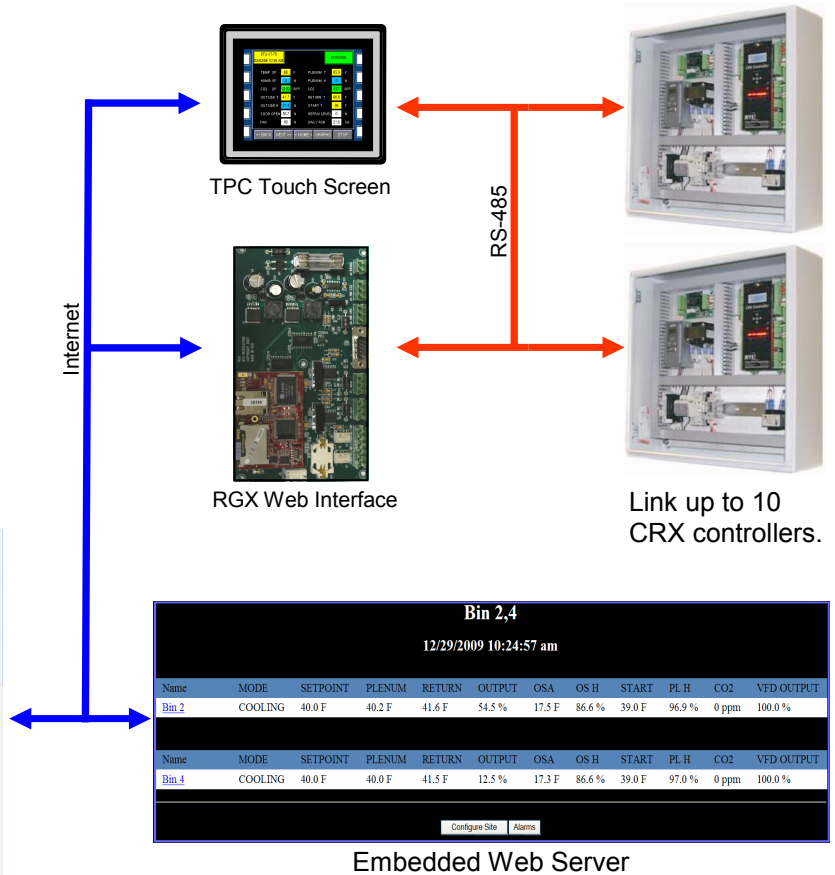
- |                 |                  |
|-----------------|------------------|
| Frequency Drive | 0-20ma / 0-10vdc |
| Refrigeration   | 0-20ma / 0-10vdc |
| Door Open       | Pulse Relay      |
| Door Closed     | Pulse Relay      |

**BTU VENTILATION - Perham MN. - 218-346-3357**

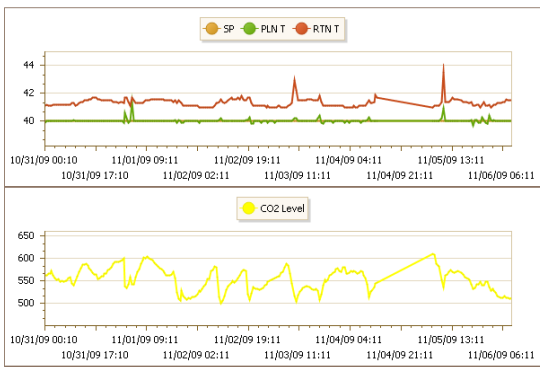
The CRX can stand alone using its own display and joystick or it can be networked with up to 10 units on one system.

The TPC is a color touch screen that can poll and display up to 10 CRX by itself or with BTU's RGX card.

The RGX acts as a web interface and communications gateway for the CRX Bin controllers.



### VPN Graphics



### Local Display & Joystick

10/22/09 07:30  
COOLING

TEMP SP 45.5 \*  
PLEN 45.6

The joystick has 5 functions, up, down, left, right and select. The up and down will scroll thru the main screens, right will show additional screen related to the main screen. The \* indicates a programmable parameter. Pressing the joystick will select the parameter and a cursor will appear. Use the up and down to increase or decrease the parameter and then press the joystick to save the change.

The left click will return to the main selection from any of the side displays. A second left click will return back to the first main screen