

HMI update from 16.7 to 17.2 or Greater  
APP- 029

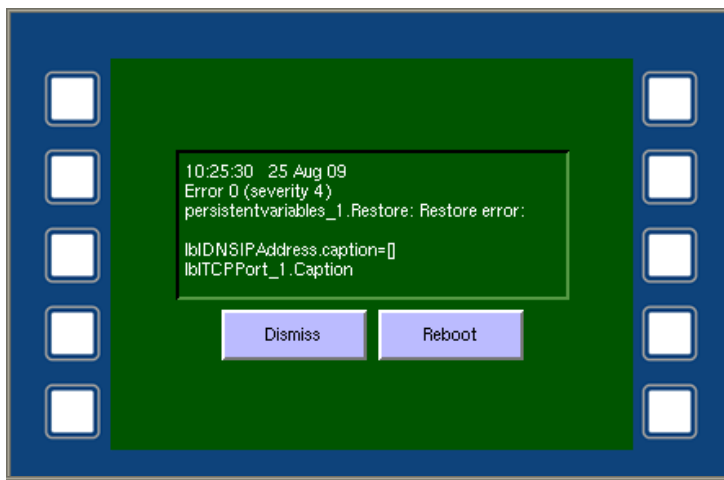
**Problem:**

When upgrading from 16.7 to a higher rev, initially then is an error that occurs. This is due to the elimination of the http port data on the setup. Initially the records were downloaded into the HMI via http. This was not very reliable and there were a number of issues with this type of down load. To get around this the hmi program was changed to create its own records. These records were recorded on time only and did not provide a activity log. It also became very complex when displaying and recording ten different units. The new software above 16.7 will down load the records from the rabbit using UDP format. This also gives the ability to download a specific date.

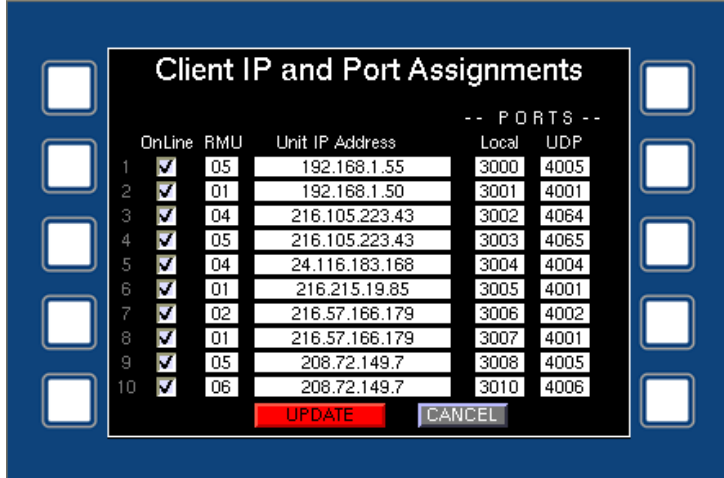
This application note will walk through the process of updating the HMI to ver 17.2.

**Update:**

Do the update using the normal procedure. Once the unit reboots and runs the new 17.2 program you will get the following screen. This procedure is the same for the G70 & G75.



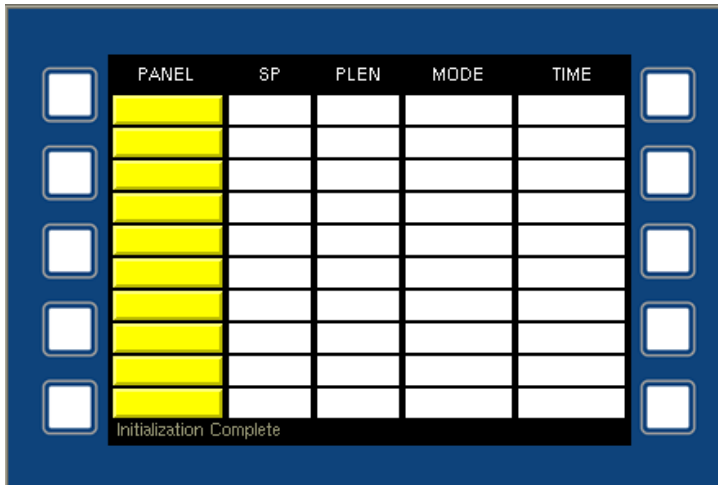
As soon as this screen appears, press the Dismiss Button right away. You should see it depress slightly indicating that it has accepted the stroke. Immediately press the upper right hand outside button. Wait until the setup screen appears.



The setup screen should no longer have the TPC column on the right.

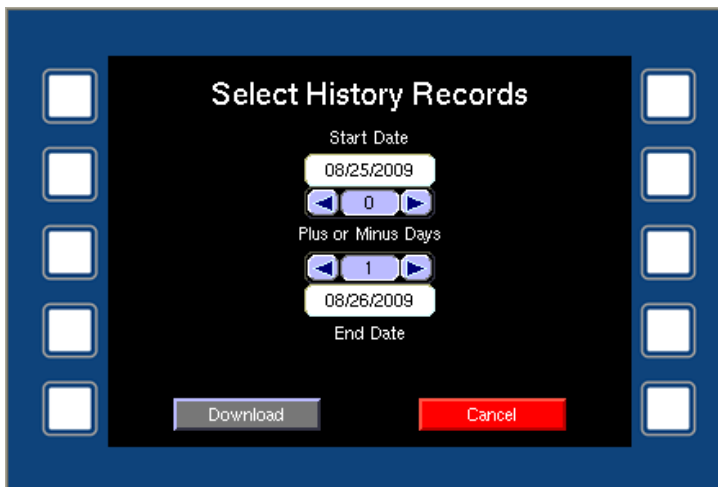
Press the update key and everything will be saved and there should be no more error on start up.

If there is a problem with the Dismiss button or anything taking to long, just power down and reboot the HMI and try it again.



On the 17.2 and greater software there is going to be a greater initial delay on boot up with this screen.

One of the new features is the pile sensor names and being able to set the records up in any desired sequence. Also the number of parameters up to twenty five in the record can be set. All this information has to be loaded for each of the XT panels that will be displayed on the HMI. Each one of the panels may have different sensor names and record sequences. It can take up to ten seconds per panel to load this information.



Clicking on the Graph button allows the selection of a beginning and ending date. The default will give records from mid-night.

The format of the records is all determined by the csv file.