

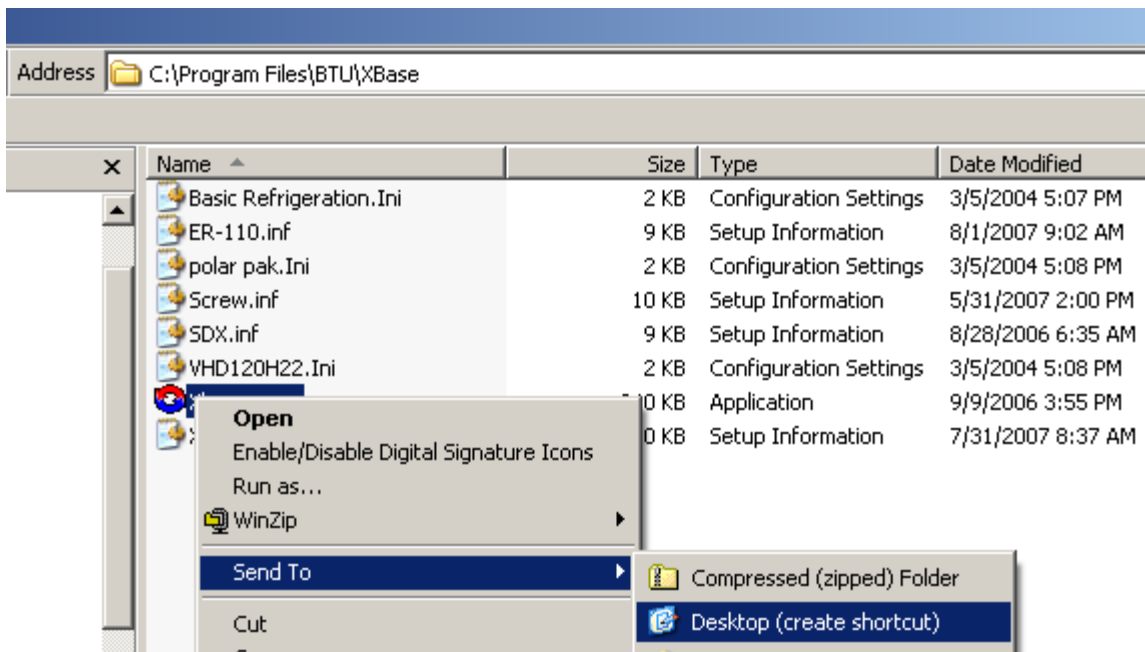
**XBASE 2007 installation New and Update
APP- 020**

Xbase is a software program that is used for setting parameters for the SDX door control, CR-110 basic refrigeration, CR-110 Screw compressors and ER-110 electronic expansion valves. This version contains all the latest inf setup files.

The software is available for down load from the technical web site. The download is a zip file that should be unzipped and then burned on a CD. If you do not want to burn it on a cd then unzip it into a temporary folder on your C drive. If you are installing out of a temporary folder, run the SUwis.exe file to start the install. If you install it from the CD it should start automatically, if not run the SUwis.exe on the CD. The will install the software in the C:\Program Files\BTU\Xbase folder. The old Xbase was installed in a Compucol folder.

Once it is finished installing, it will put a Xbase icon on your main screen. Right click and remove this short cut. If you have any other Xbase icon's on your screen, remove these as well.

Open up your windows explorer and go to C:\Program Files\BTU\Xbase folder.



Right click on the Xbase.exe file, select Send To, then Desktop (create shortcut).

Do this four times to put four shortcuts on your desktop.



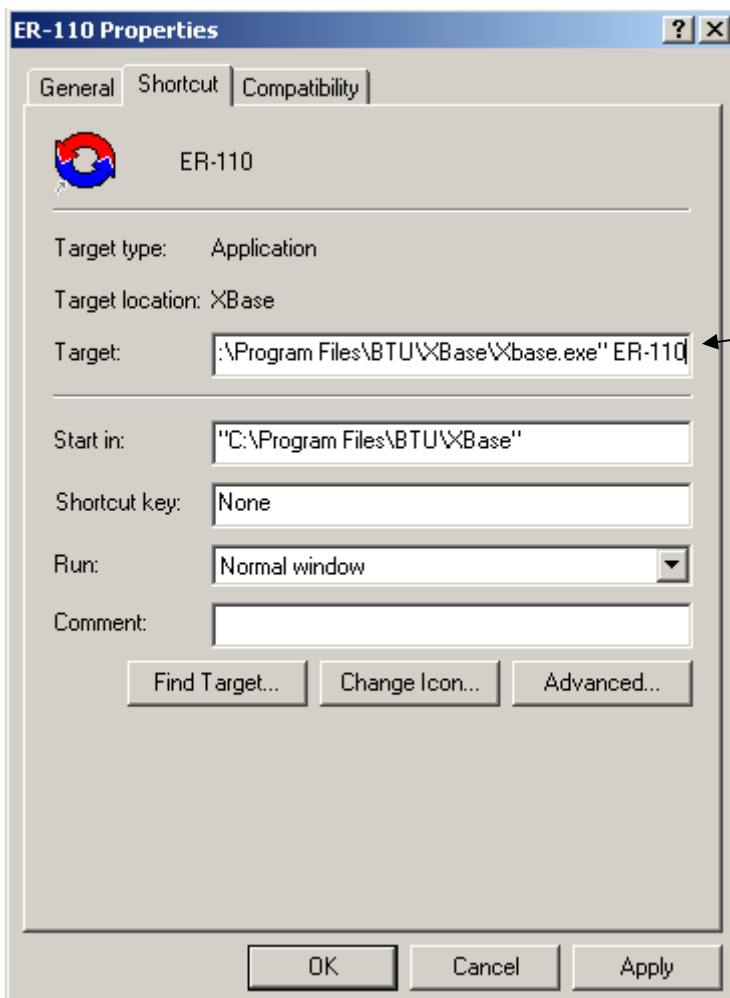
You should now have four shortcuts to Xbase.

Right click on each one and rename them the following: CR-110, ER-110, SCREW,



You should now have the four new short cuts. The CR-110 shortcut should now open Xbase for you.

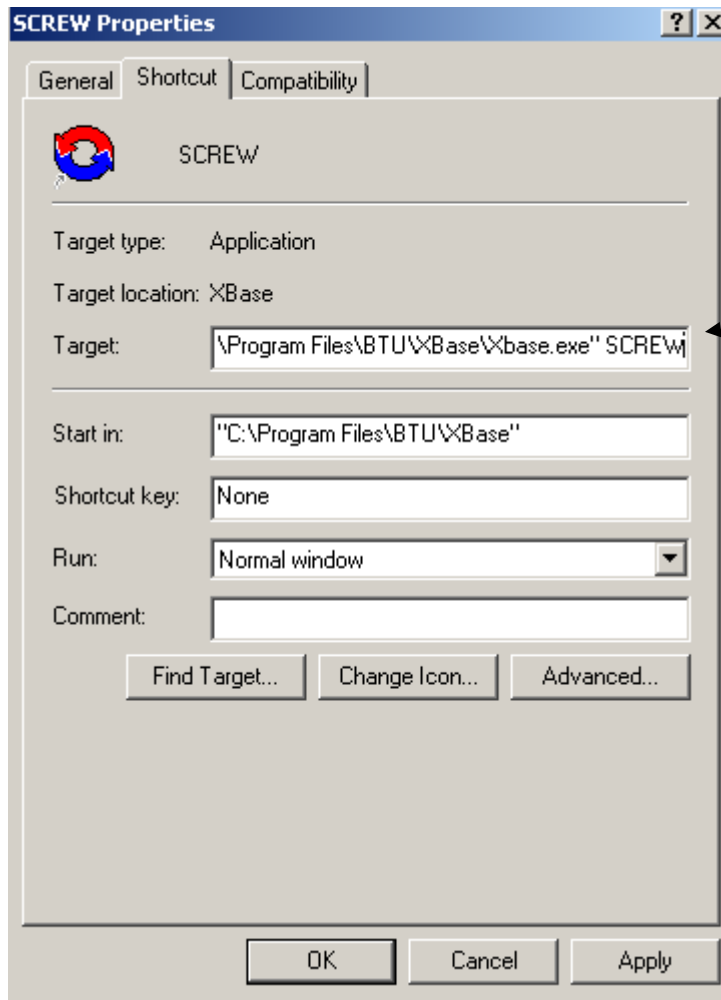
Right click on the ER-110 shortcut and select properties.



After the " type in a space then ER-110

Then click on Apply. This will cause Xbase to initialize for the ER-110 card.

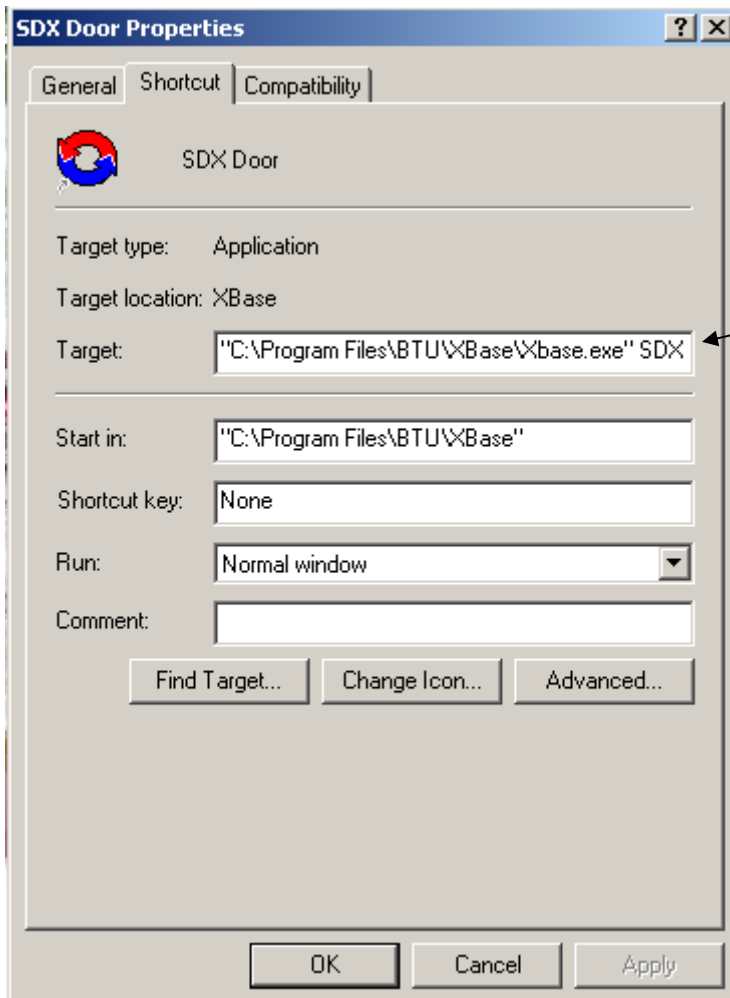
Right click on the SCREW shortcut and select properties.



After the " type in a space then SCREW

Then click on Apply. This will cause Xbase to initialize for the SCREW compressor.

Right click on the SDX Door shortcut and select properties.



After the " type in a space then SDX

Then click on Apply. This will cause Xbase to initialize for the SDX Door card.