

Network Router Setup Application Note
APP- 012

THEORY

A router is used to provide a sub network of IP numbers and provide access to the outside world. For use in our world, it allows the use of one static IP number to access a large number of panels using different ports. When the request comes into the router on a given port, the router will look up the corresponding internal IP number and route the information to it.

SETUP

Most routers are set on an internal IP address of 192.168.1.1 To access the router plug you lap top into the router. The router should assign you lap top a IP number using the DHCP feature. Bring up you internet explorer and type in http://192.168.1.1 and it should come up and ask for a user name and password. Leave the user name blank and type in admin for the password. Once you are in you should get the following page.

LINKSYS Setup Password Status DHCP Log Help Advanced

SETUP

This screen contains all of the router's basic setup functions. Most users will be able to use the router's default settings without making any changes. If you require help during configuration, please see the user guide.

Host Name: (Required by some ISPs)

Domain Name: (Required by some ISPs)

Firmware Version: 1.39, Jun 04 2001

LAN IP Address: (MAC Address: 00-20-78-D2-42-19)
 . . . (Device IP Address)
 (Subnet Mask)

WAN IP Address: (MAC Address: 00-20-78-D2-42-1A)

Obtain an IP Address Automatically

Specify an IP Address

Subnet Mask: . . .

Default Gateway Address: . . .

DNS (Required)

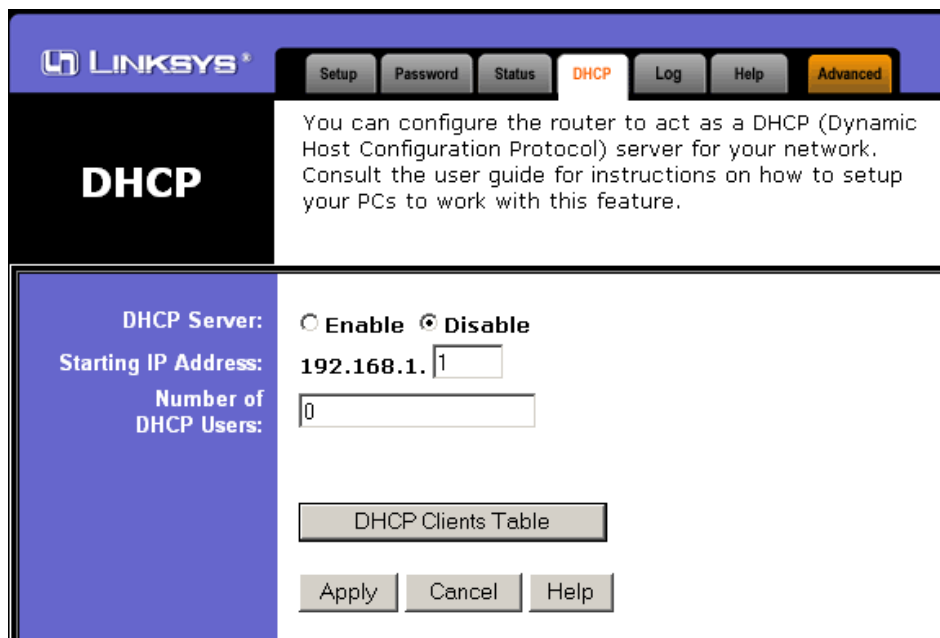
1: . . .

2: . . .

3: . . .

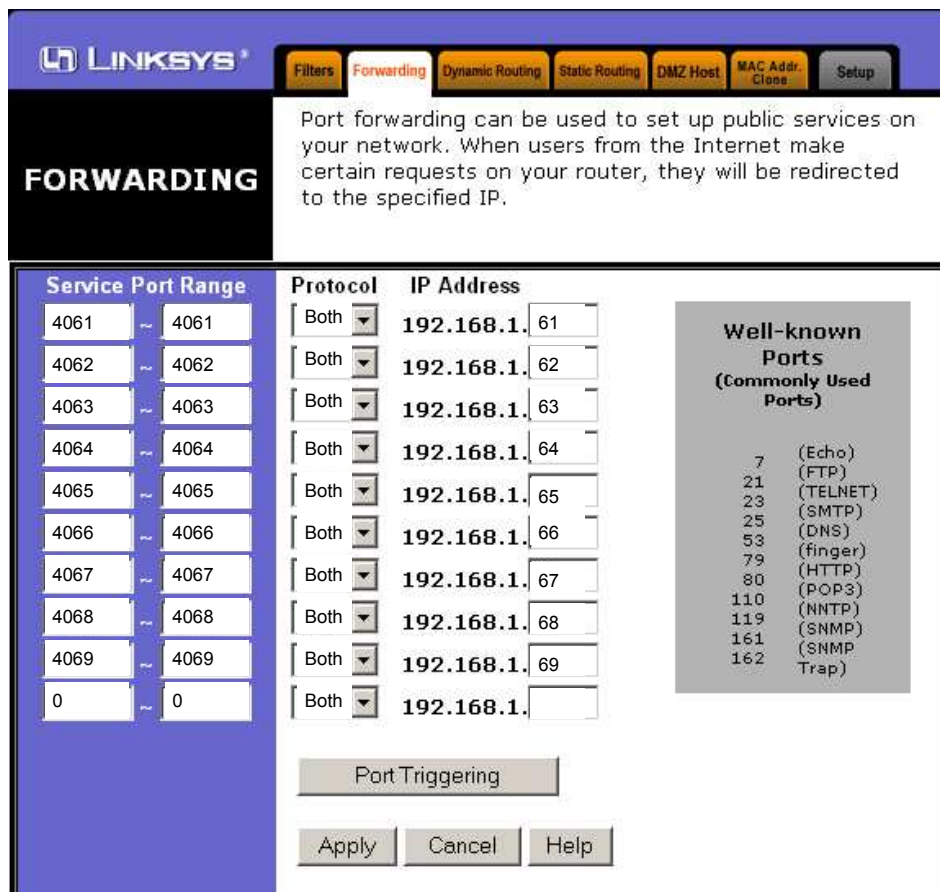
You provider should give you a static IP number, a default gateway number, a 1 or 2 DNS numbers.

These numbers need to be assigned in this setup page.



Next click on the DHCP tab. In most case you would want the DHCP to be Enabled. The Starting IP Address should be set at 100, this will ensure that you it won't assign the same number as one of the panels. When done, click on Apply.

Next click on the Advanced tab. Then click on the Forwarding tab.



This page is where the outside ports are forwarded to the inside IP numbers.

This example is for 9 XT panels, with ports from 4061 to 4069. The corresponding inside IP numbers are 192.168.1.61 thru 192.168.1.69.

When done, click on Apply.