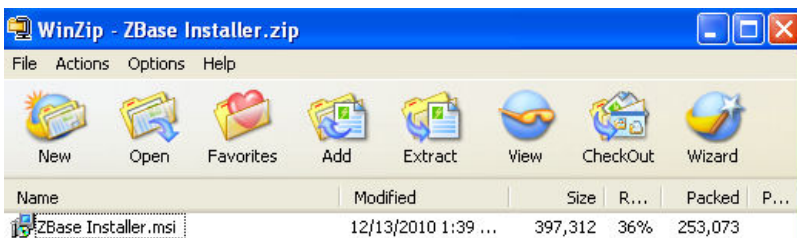


Zbase Programming Interface
APP- 039

Application:

This application note will cover installation and operation of BTU’s new programming interface Zbase. Zbase was developed to replace Xbase and will be able to communicate with any of the BTU product line. Zbase is completely driven by a Excel csv spread sheet file. The program can be configured and custom made for different products.

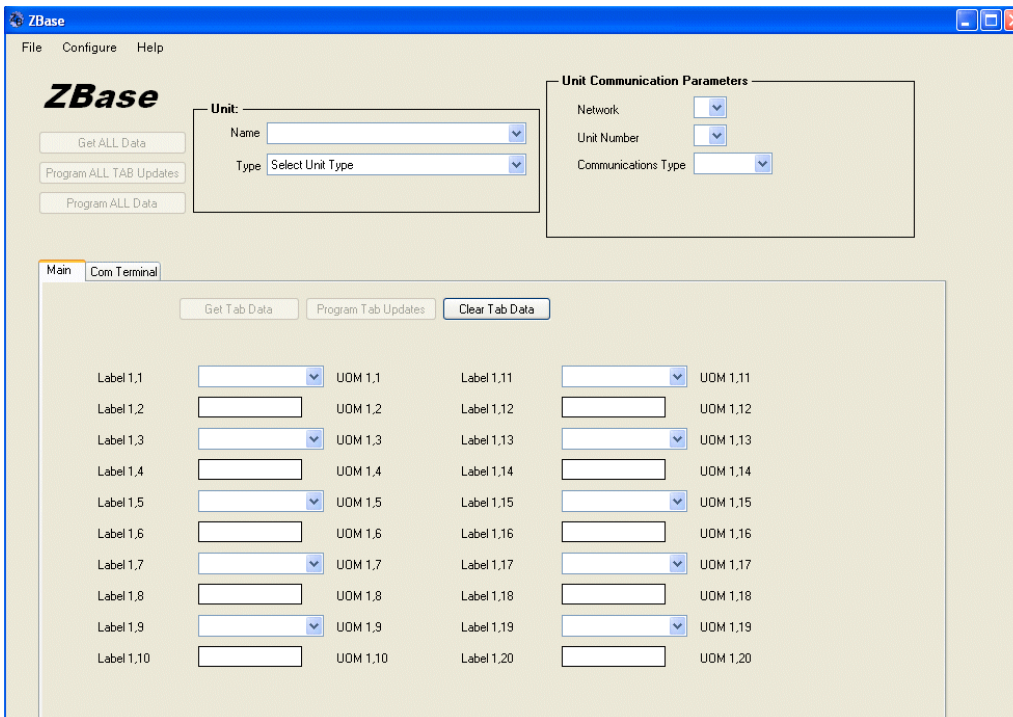
Installation:



Download the Zbase Installer file off of the tech site. Double click on the Zbase Installer.msi file to install.

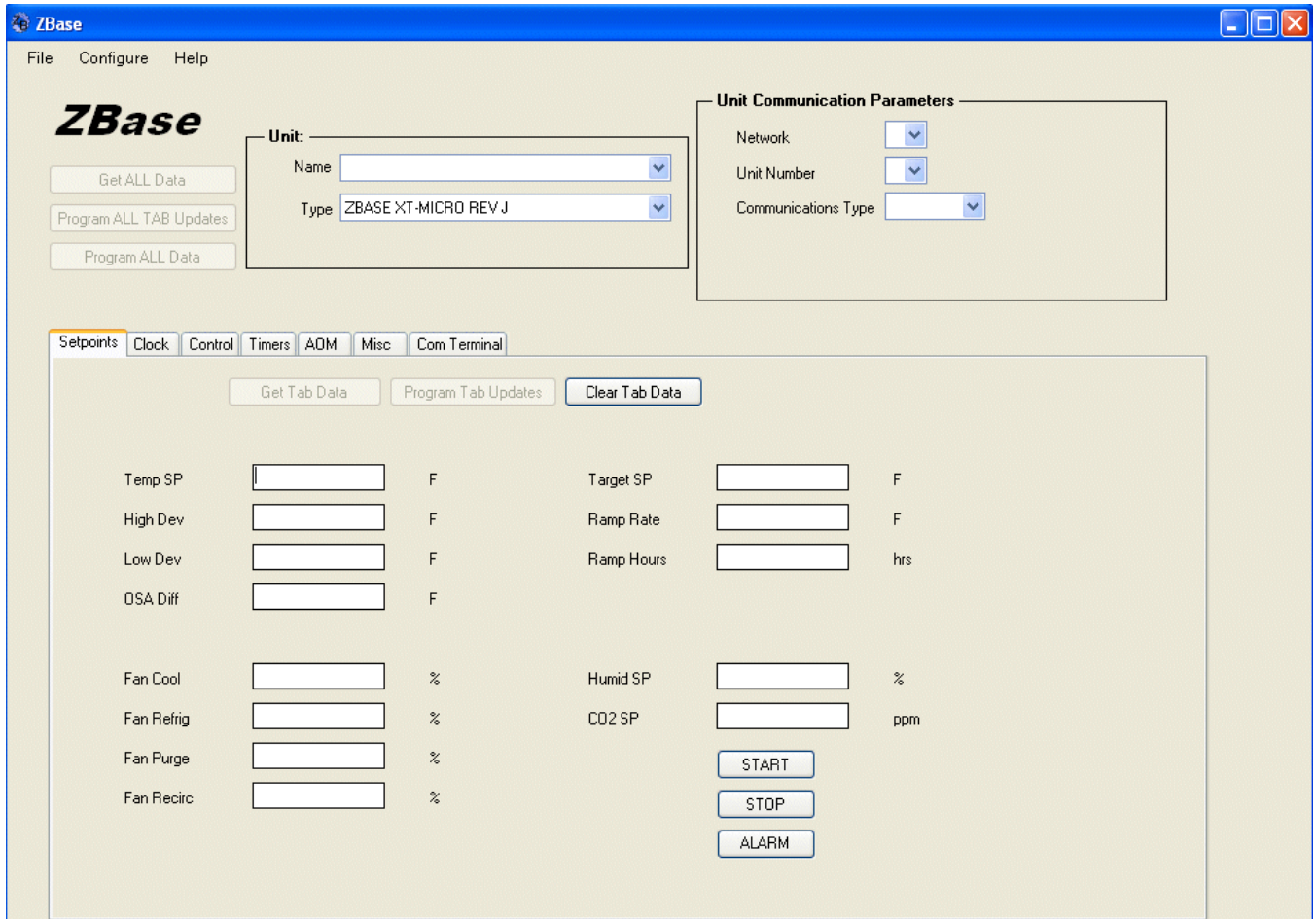
Updates will be done with a new install file. Updates will now remove any of the existing files.

Operation:



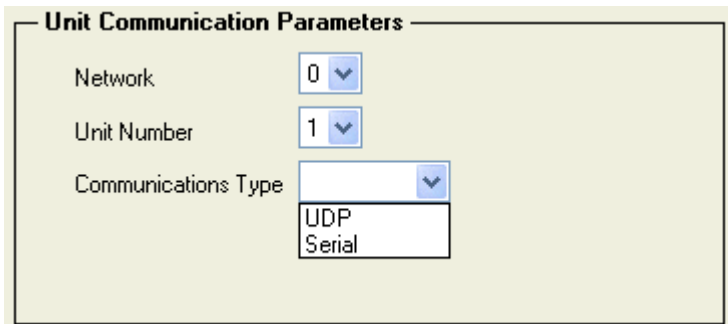
When Zbase is first opened, it comes up unformatted. The entire layout of Zbase is controlled by a csv file. The current csv file should have been loaded when installed.

Click on the Type dropdown and select the latest XT Micro csv file.



The Zbase program can be used for any of the BTU product line. Clicking on the Type drop-down and choosing the corresponding csv file will configure Zbase for the type of device. Zbase can have programmable boxes, drop downs and push buttons. This app note will use the XT Micro for all examples.

Communications:



Zbase can communicate using either a serial connection or through UDP via Ethernet. Use the drop down to choose the desired type.

Set the desire Network and Unit numbers.

Unit Communication Parameters

Network: 0
Unit Number: 2
Communications Type: UDP
IP Addr: 192.168.1.58 Port: 4008
Communications Timeout: 3 Seconds (ex. 3.1)

For this example, the XT Micro is #02 and is connected to the internet using a TPC touch screen. The IP address is 192.168.1.58 and the port is 4008.

The Communications Timeout is the length of time (in seconds) between the request and the response before an error will occur. If using RS-485 wireless links or using a slow Ethernet connection, this time may need to be extended.

Unit Communication Parameters

Network: 0
Unit Number: 2
Communications Type: Serial
COM Port: COM3 Baud Rate: 19200
Communications Timeout: 3 Seconds (ex. 3.1)

This example shows the setup for the XT Micro #02 using a serial connection. When serial is selected, use the drop downs to select the proper Com port and Baud Rate.

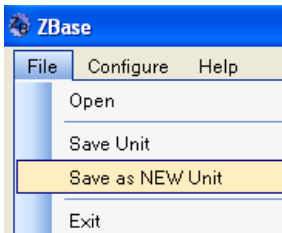
Saving Setup:

Unit:
Name: [Empty]
Type: ZBASE XT-MICRO REV J

Unit Communication Parameters

Network: 0
Unit Number: 2
Communications Type: Serial
COM Port: COM2 Baud Rate: 19200
Communications Timeout: 3 Seconds (ex. 3.1)

Once the Type is selected and the Communications parameters are selected, the Save As command can be used to save the file.



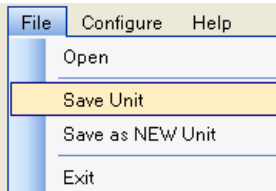
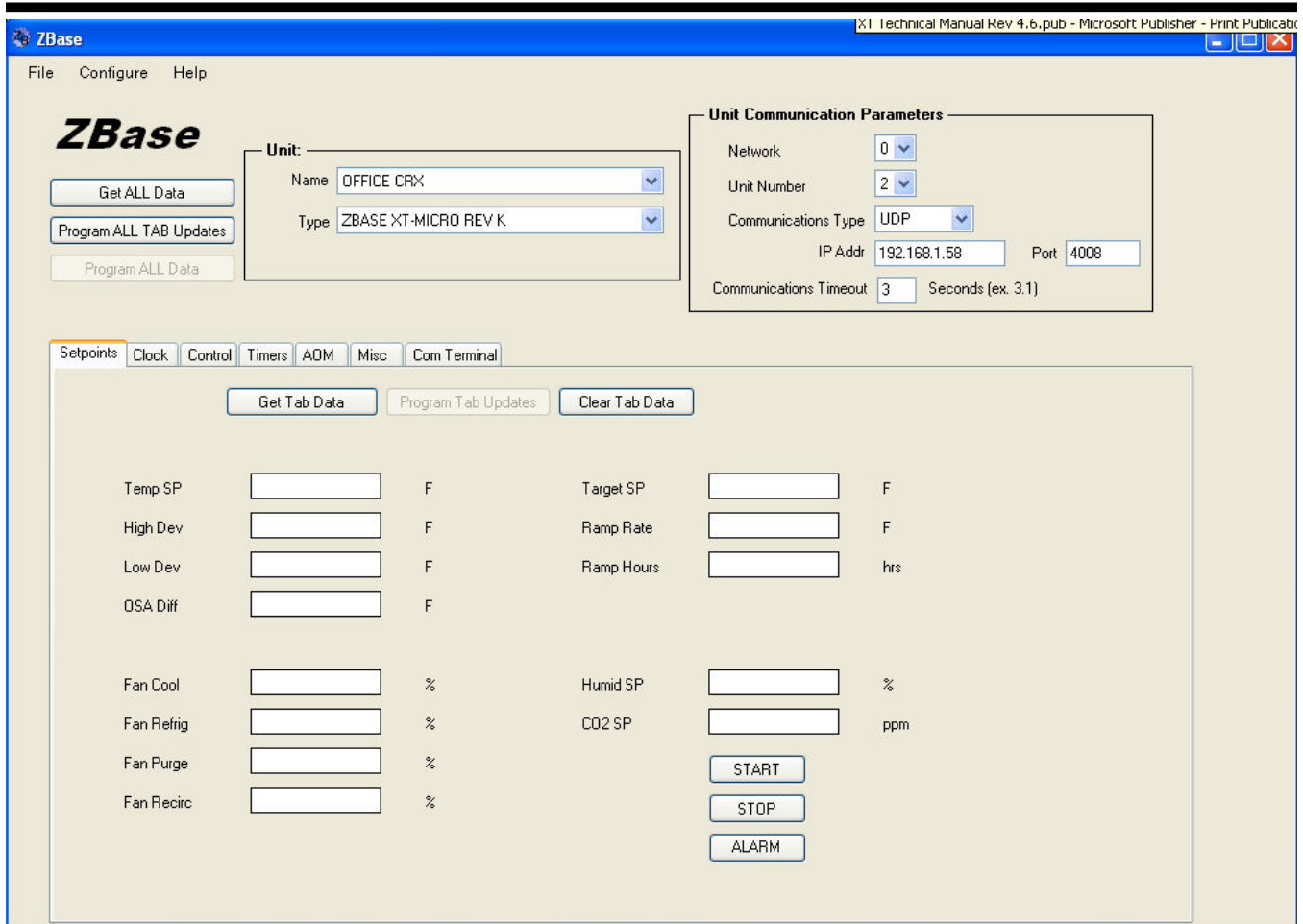
Click on File and then Save as NEW Unit.

New Unit Name

Enter New Unit Name. [OK] [Cancel]

Wind River XT Micro

Enter a name that describes the complex and unit number and type.



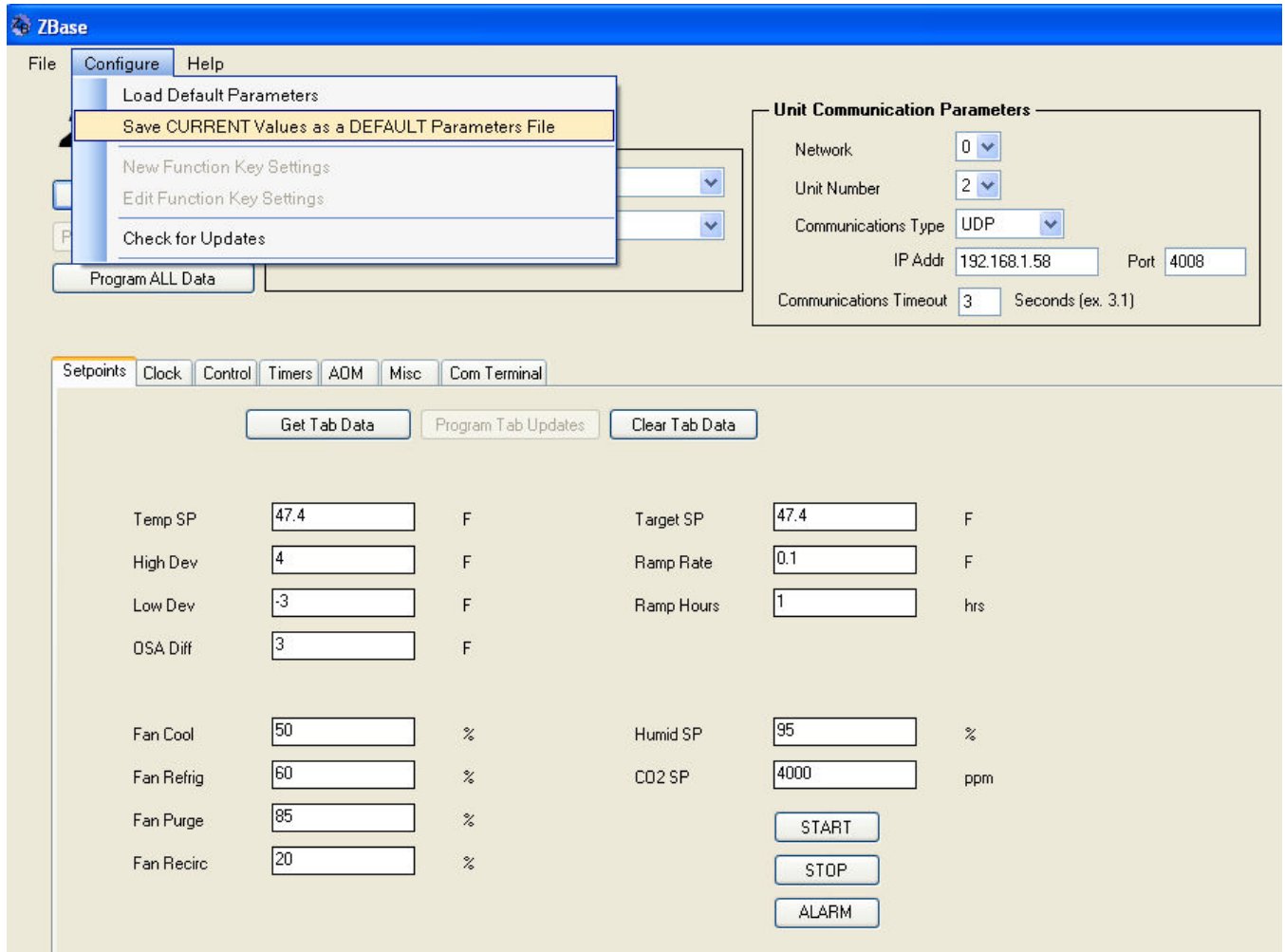
Any number of units can be saved and then selected using the Name drop down. Changes can be made and saved using the Save command.

Zbase Operation:

Once connected to the XT-Micro either by serial or UDP, click on the Get all Data to load all tabs. To update only the current tab, click on Get Tab Data.

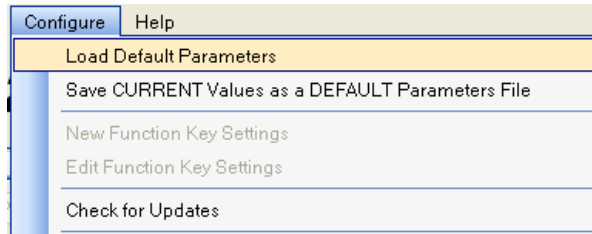
Make changes to the desired parameter and then click on the Program Tab Update.

Save Current Settings:



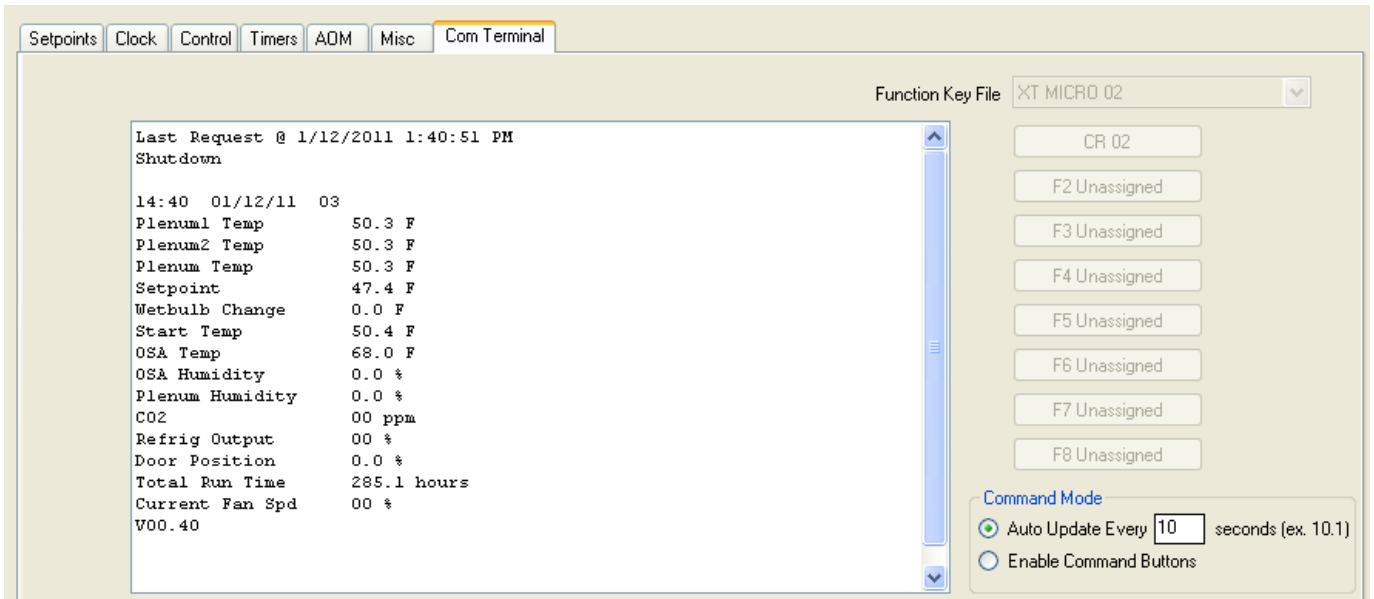
To save the current values to a default file, first load all parameters using the Get All Data button. Then click on the Configure tab and then on Save CURRENT Values as a DEFAULT File. The default file will have a def extension. Note - the default file must match the parameter in the Type dropdown when loading.

To open a default file, click on the Configure tab and then on Load Default Parameters. Select the desired file and open.



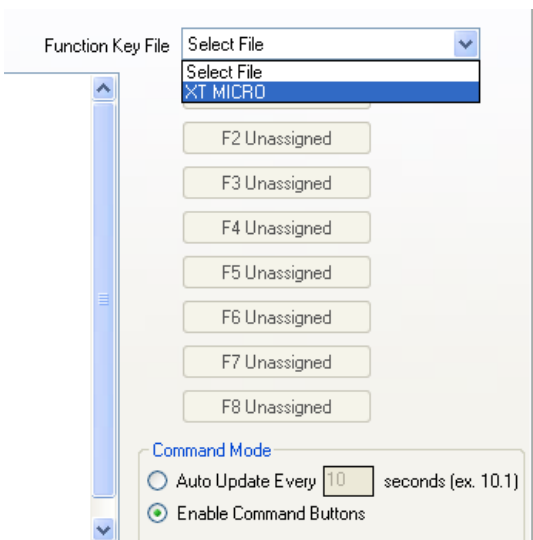
Once the file is open, the Program All Data button can be used to program all data.

Terminal:



The terminal tab will issue a WW string command to display a current update. The update time can be changed if desired. The default setting is 10 seconds.

Zbase has the ability to create and save a Function Key File. This allows for special commands to be entered and saved. To use the function keys, click on the Enable Command Buttons.



Click on the dropdown and select XT MICRO.

